

# PASSCAL

Program for Array Seismic Studies of the  
Continental Lithosphere

Report for FDSN WKV Meeting  
Perugia, Italy  
July 2 - 12, 2007

# What does PASSCAL support?

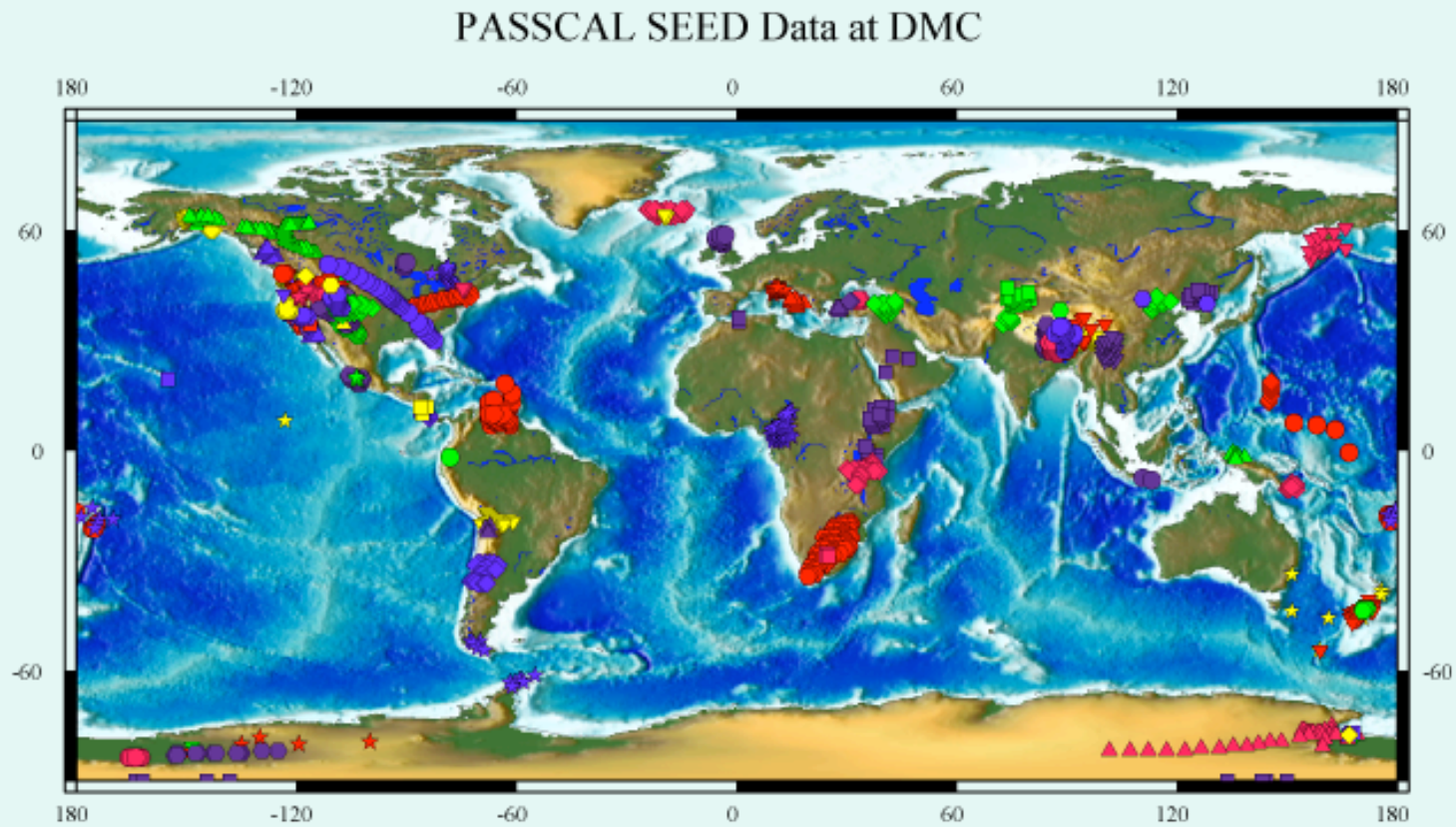
- PASSCAL core program
  - PI driven science projects
- PASSCAL core program Polar Science
  - Special equipment for cold regions
- USArray Flexible Array (FA)
  - PI driven science associated with USArray
- USArray Transportable Array (TA)
  - Logistics support of field operations

# PASSCAL Inventory

Item	PASSCAL	FlexArray
Reftek 130	470	355
Quanterra Q330	377	-
Multi-Channel	10	-
Texan	1000*	1200
Broadband Sensor	450	235
Mid-Band Sensor	100	-
Short-Period Sensor	190	120

\*Includes 427 UTEP Texans

# PASSCAL Virtual Network



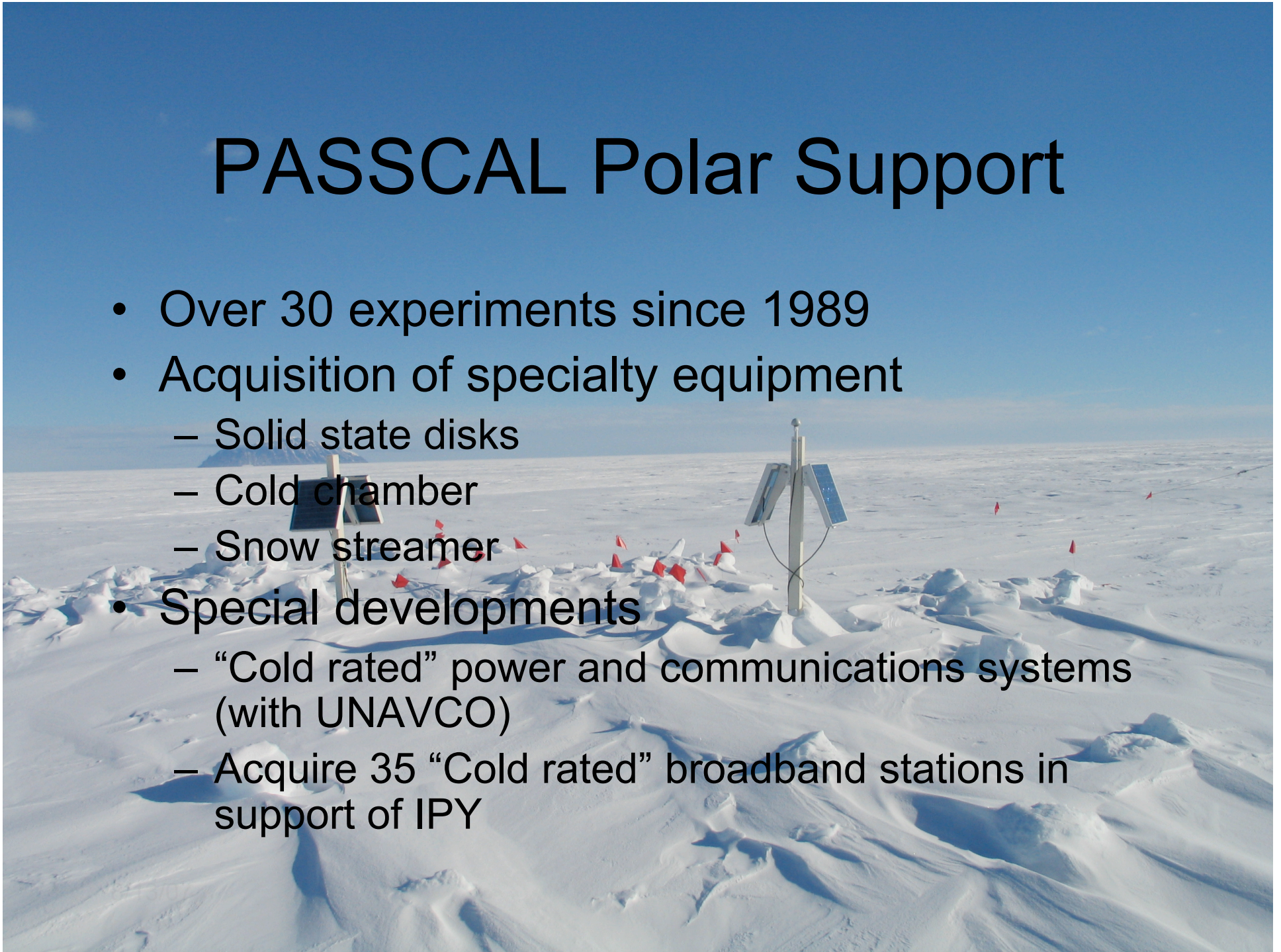
8/13/07

# Experiments for 2006

Experiment	
Broadband	28
Short Period	22
RT125 (Texan)	7
Multi-Channel	13
<b>Total</b>	<b>70</b>

# PASSCAL Polar Support

- Over 30 experiments since 1989
- Acquisition of specialty equipment
  - Solid state disks
  - Cold chamber
  - Snow streamer
- Special developments
  - “Cold rated” power and communications systems (with UNAVCO)
  - Acquire 35 “Cold rated” broadband stations in support of IPY



# PASSCAL Support

- Planning and training
- Shipping support
- In-field support and training
- Maintenance
- Software tools
- SEED generation support

# USArray Flexible Array

- Additional field support
  - Vaults and Enclosures
- Archiving
  - PASSCAL staff archive Data with DMC PI support

FA SEED Data at DMC

